

FEEDS SUCCESS

COMPACT



SCHAUMANN
FEEDS SUCCESS



Pigs 2025

NATU-PIG SAFETY-Line

The path to
antibiotic-free weaning

FORTE Line –

For the
strong sow

SCHAUMALAC FEED PROTECT

Success by
fermentation

Dear Pig Farmers,

Today, pig farming is under more societal scrutiny than ever. Animal welfare and efficiency as well as resource-friendly production are key topics that demand ever higher standards from us. At the same time, pig farmers in Europe are faced with rising feed costs political mandates for emissions reduction and consumers' increasing calls for transparency and regionality.

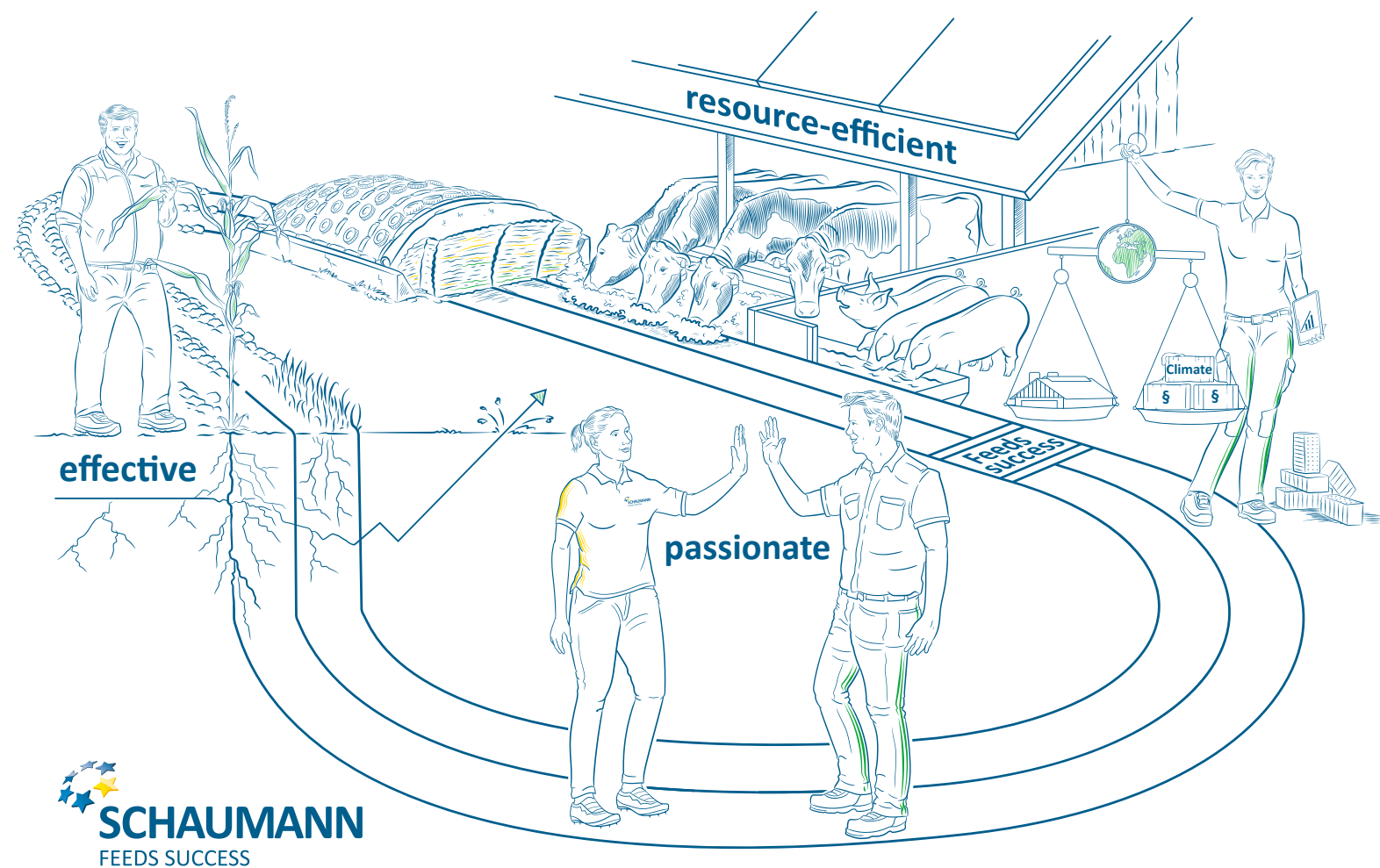
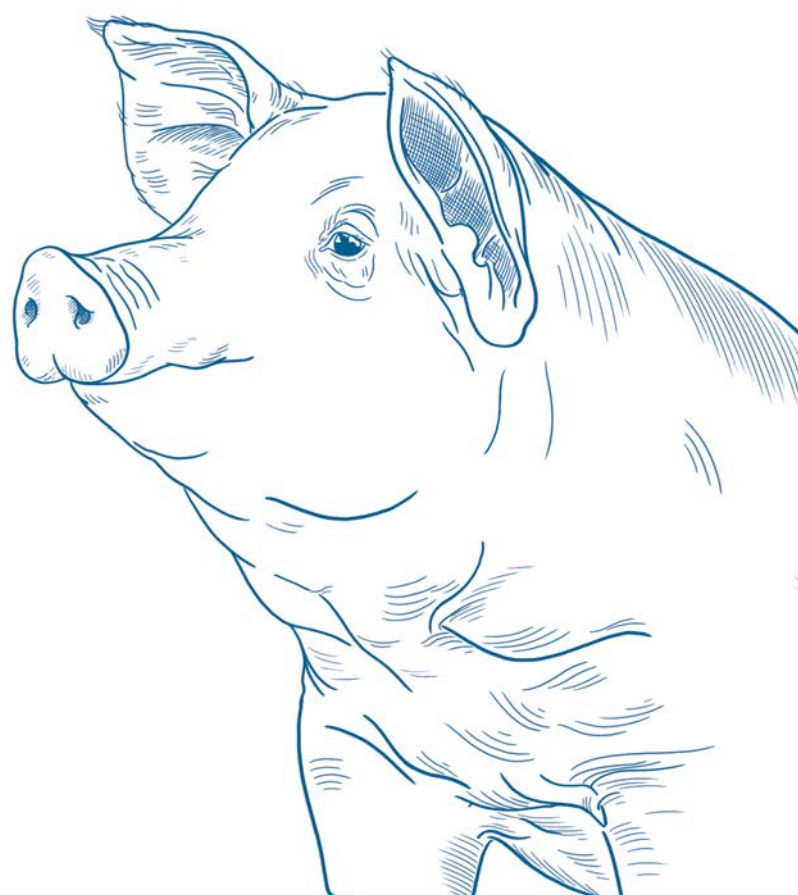
Efficiency and sustainability – The key to success

At Schaumann Agri International, we focus on innovative feeding concepts grounded in years of research that offer practical solutions to these challenges. Our aim is to develop high-quality products that balance animal welfare with production goals and environmental considerations.

Passion meets efficiency

With passion and dedication, we support you by providing sustainable, efficient solutions tailored to your daily work. Your operational goals are at the heart of our advisory services. Let's work together to drive the future of pig farming towards success and sustainability.

For your success,
Your SCHAUMANN Team



The SCHAUMANN concept – More than just mineral feed

Always there – where you need us

Our highly qualified employees and partners are always there for you. As your local contacts, they are there when you need them - in the barn, at the feed silo or in the field. We ensure that our support is tailored to the specific needs of your business.

A hub for innovation and knowledge exchange

Hülseberg Estate, home to a 220-head dairy herd, plays a key role in research not only for cattle but also for pigs and poultry. All of our active ingredients undergo rigorous field testing to prove their efficacy. As a best-practice farm, Hülseberg Estate combines practical research with modern agriculture and serves as a meeting place for knowledge exchange and innovation.

We look forward to your visit!

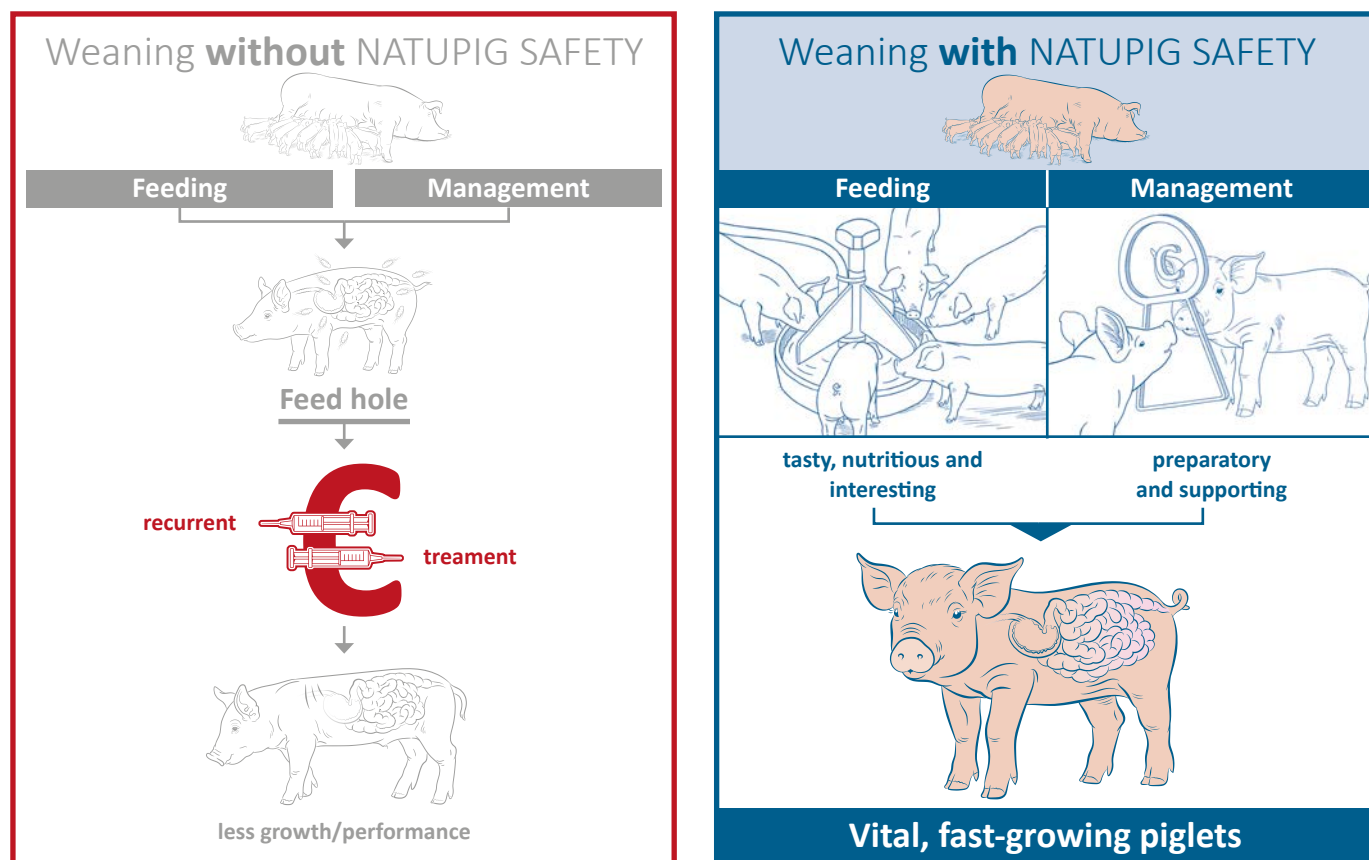
The path to antibiotic-free weaning

The NatuPig Safety range is specifically designed to meet the complex nutritional needs during the weaning period. These special weaning feeds act as an individual prophylactic solution, tailored to prevent piglet diarrhoea and reduce the need for medical treatment.

SCHAUMANN's active ingredients in NatuPig Safety strengthen the piglets' natural immune defences and effectively inhibit the growth of E. coli bacteria. These properties provide reliable prevention and ensure healthy, resilient piglets during the critical weaning period.

Safety for piglets with NATUPIG SAFETY –

Only palatable weaning feeds combined with well-designed management strategies can sustainably ensure healthy, high-performing piglets.



The NATUPIG SAFETY line of weaning feeds

NATUPIG START 50 PLASMA SAFETY G

- optimum supplement to the farm's own grain
- ideal mix: 50% supplement, 25% wheat, 25% barley

NATUPIG START 50 SAFETY G

- plant-based weaning feed with specially processed yeast as an alternative to plasma protein
- ideal as a supplement to homegrown grain in a mix of 50% supplement, 25% wheat, 25% barley

NATUPIG START PLASMA SAFETY G

- for those who rely on complete feeds during weaning

NATUPIG FA II FISH SAFETY

- provides specific support during further rearing of piglets
- a complete feed alternative to farm-mixed rations with Natupig mineral feed

Fermentation with SCHAUMALAC FEED PROTECT XP – Get more out of your feed

Targeted fermentation significantly improves feed hygiene, stabilises gut flora and protects against harmful pathogens. The powerful lactic acid bacteria in SCHAUMALAC Feed Protect XP products significantly improve phosphorus and nitrogen digestibility and overall nutrient availability in your feed.

Benefit from improved gut health, enhanced digestibility, accelerated growth and reduced feed costs – for resource-efficient success in your pig production.

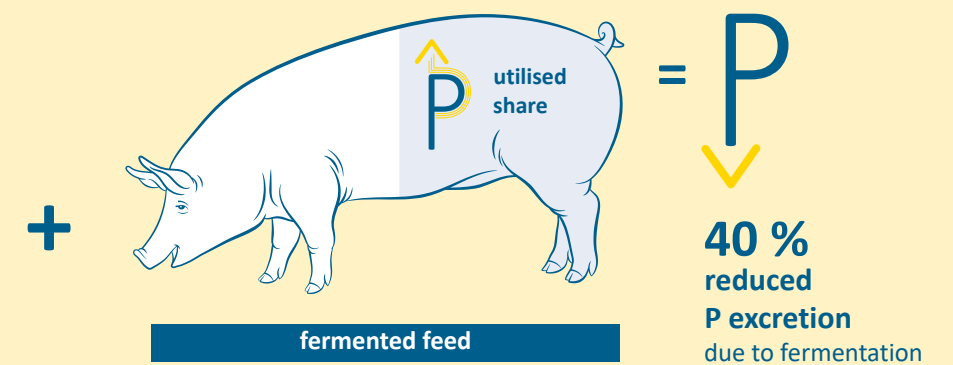
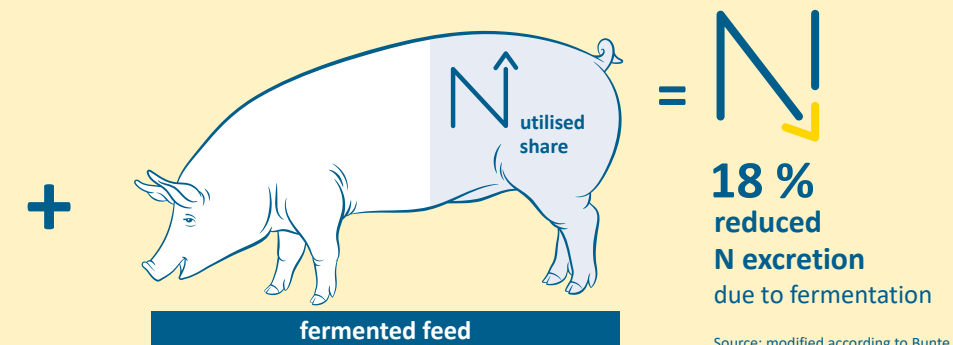
The success formula

Fermentation with

SCHAUMALAC
FEED PROTECT XP



low pH value
inhibits pathogenic germs



The foundation – Strong from the start?!

The foundation of a sow is critical to the long-term success of pig production. A healthy, high-performing sow not only ensures productivity but also the economic viability of the farm.

Together strong:

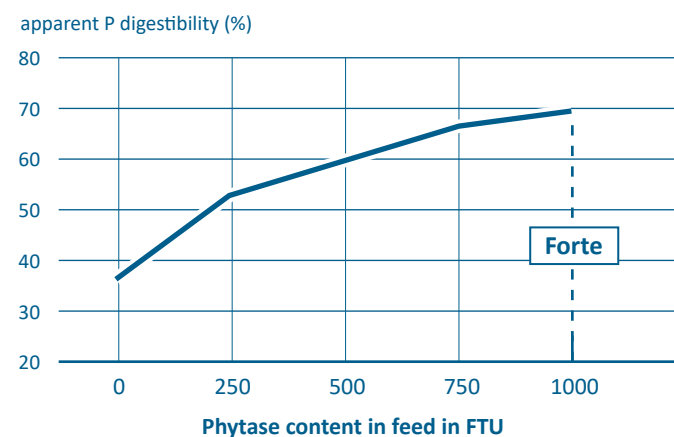
- Strong bones
- Strong tendons and ligaments
- Healthy joints and cartilage
- Correct posture

FORTE-Line – For the strong sow

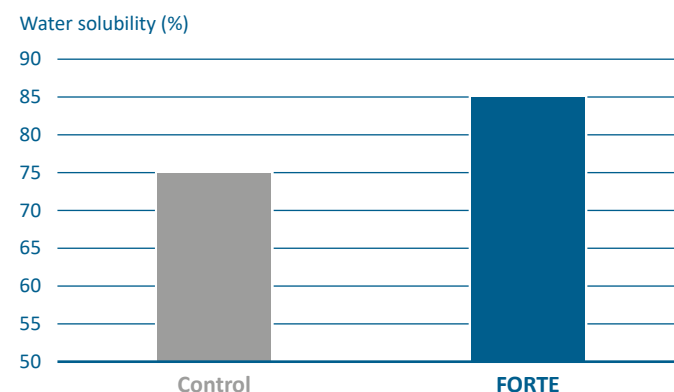
The FORTE range is designed to strengthen the foundation of the body. These products optimise phosphorus absorption and calcium metabolism, supported our vitamin D₃ booster complex.

This improved nutrient supply promotes healthier hooves, stronger joints and increased bone density – because a strong sow is the keystone of a successful pig farm.

Optimum phosphorus digestibility with FORTE (with 1,000 FTU phytase)

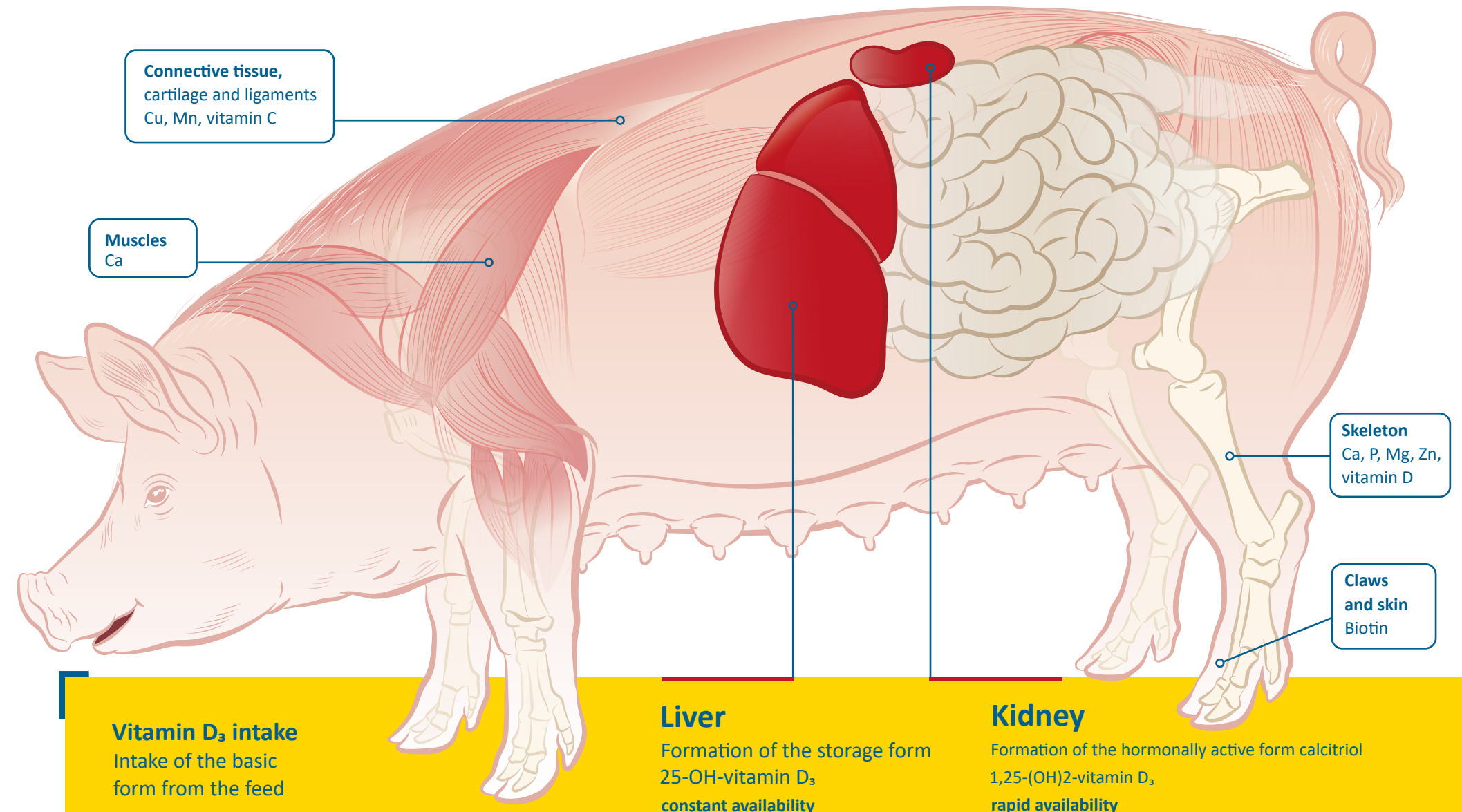


Increase in phosphorus availability with FORTE - compared to water solubility



Source: Schothorst Feed Research

Which nutrients specifically strengthen the foundation?



How our vitamin D₃ booster complex works for strong bones

Vitamin D₃ plays a crucial role in maintaining the health of pigs, particularly by supporting stable bone formation and other vital functions such as the immune response. Breeding sows and piglets particularly benefit from optimal levels of vitamin D₃, as it enhances sow fertility and supports healthy piglet growth. The FORTE line provides sows with all three forms of vitamin D₃, ensuring both a rapid and sustained supply, which is essential for maintaining consistent health and productivity throughout the herd.

The FORTE line of mineral feeds

NATUFIG ZT 50 FORTE and SCHAUMAPHOS ZT 40 FORTE

- specific support for the sow during pregnancy

NATUFIG Z 60 FORTE

- for those who use a mineral universally



Schaumann Agri International GmbH
An der Mühlenau 4
25421 Pinneberg
Germany
Tel. + 49 4101 218 5300
www.schaumann.info

Schaumann Agri Austria GmbH & Co. KG
Jakob Fuchs-Gasse 25-27
2345 Brunn am Gebirge
Austria
Tel. + 43 2236 31641 0
www.schaumann.info